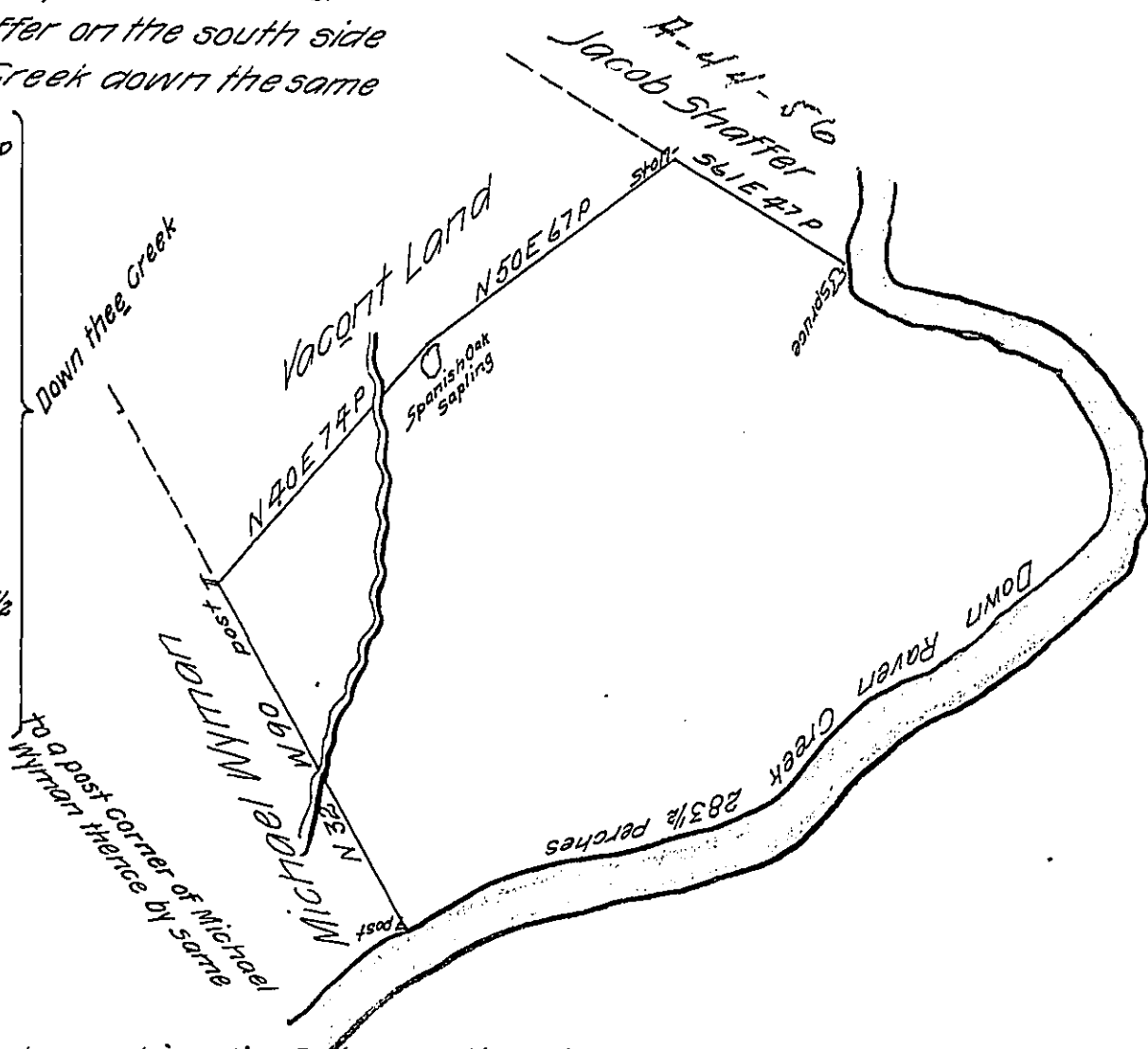


Began at a spruce corner of Jacob Shaffer on the south side of Raven Creek down the same

- 1 S 19 E 10 P
- 2 S 80 E 11
- 3 S 86 E 18
- 4 S 63 E 20
- 5 S 41 E 13
- 6 S 25 E 10
- 7 S 2 E 11
- 8 S 38 W 17
- 9 S 47 W 11
- 10 S 50 W 39
- 11 S 44 W 36 1/2
- 12 S 74 W 50
- 13 S 63 W 37



- 14 N 32 W 90 to a post in a lin. of Weyman thence by Vacant
- 15 N 40 E 74 to spr sap and
- 16 N 50 E 67 to a stone in a lin. of Jacob Shaffer and by the same
- 17 S 61 E 47 to the place of beginning

By virtue of a warrant dated the sixteenth day of September one thousand seven hundred and seventy six and surveyed on the seventh day of November the same year unto Frederick Weyman the above described tract-land situated in Brunswick Township in Berks County containing one hundred and twenty five acres and one hundred perches and the allowances of six percent

Henry Vanderslice

IN TESTIMONY that the above is a copy of the original remaining on file in the Department of Internal Affairs of Pennsylvania, made conformably to an Act of Assembly approved the 16th day of February 1833, I have hereunto set my hand and caused the Seal of said Department to be affixed at Harrisburg, this fifth day of May 1907

Henry Howel
Secretary of Internal Affairs.